

20k scanner set

User manual

Potentiometer description:

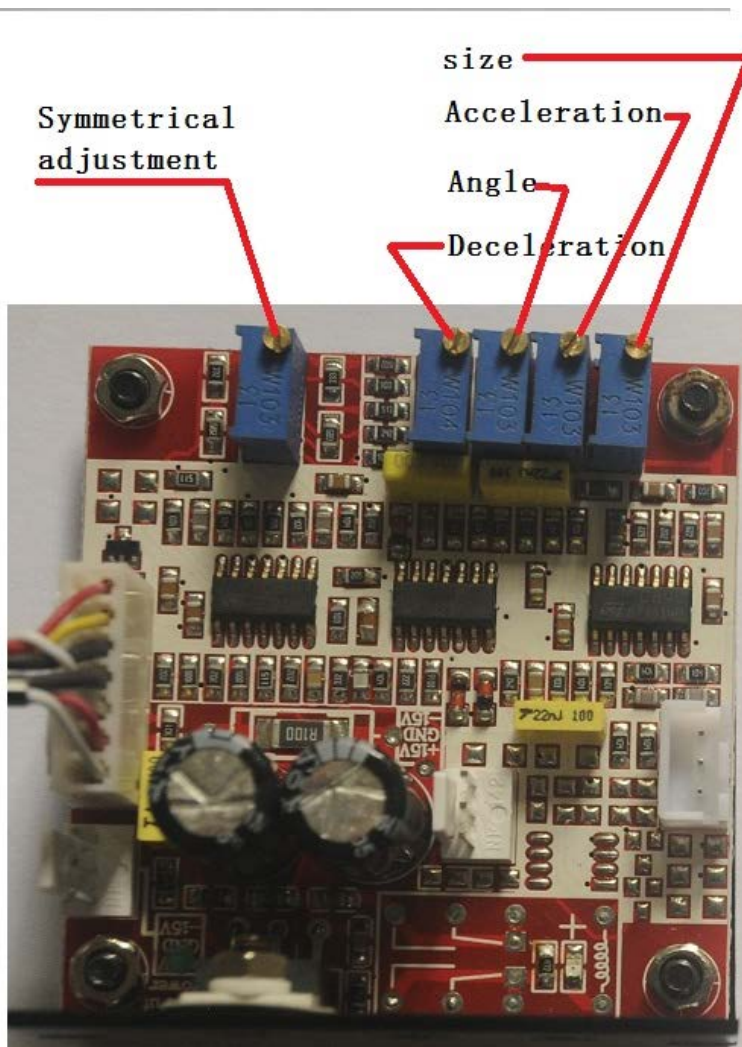
- IS Input scale (adjusted only in factory)
- SG Servo gain (power of the feedback signal for internal PID controller)
- LFD Low frequency damping (correct overshoot)
- HFD High frequency damping (correct undershoot)
- LIN Zero offset (electrical offset of the driver, adjusted only in factory)
- PS Position scale (increases or decrease input sensitivity of the computer, DO NOT change it)

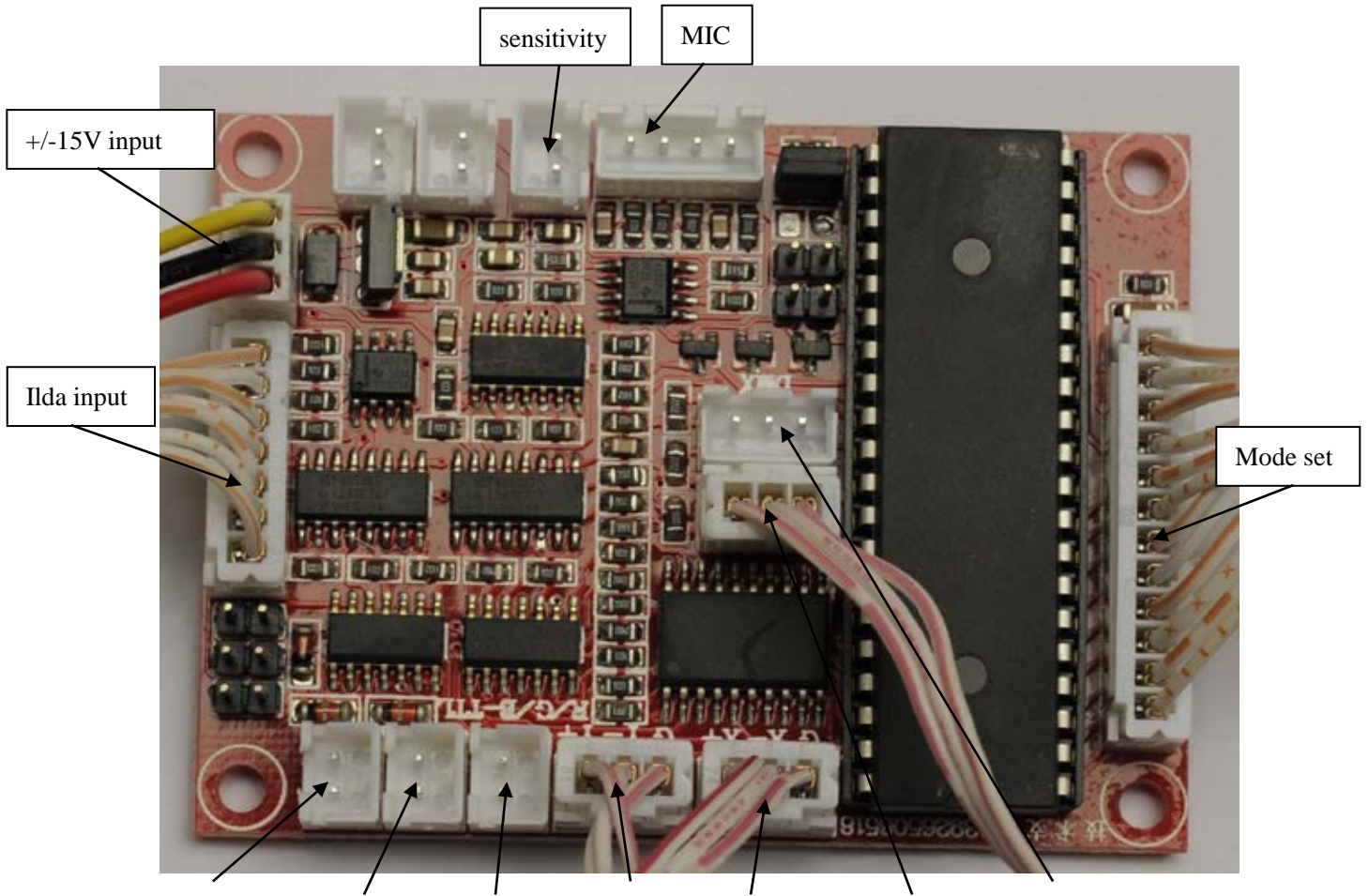
These pots aren't marked

To be able to tune you need to know which pot on the board is which

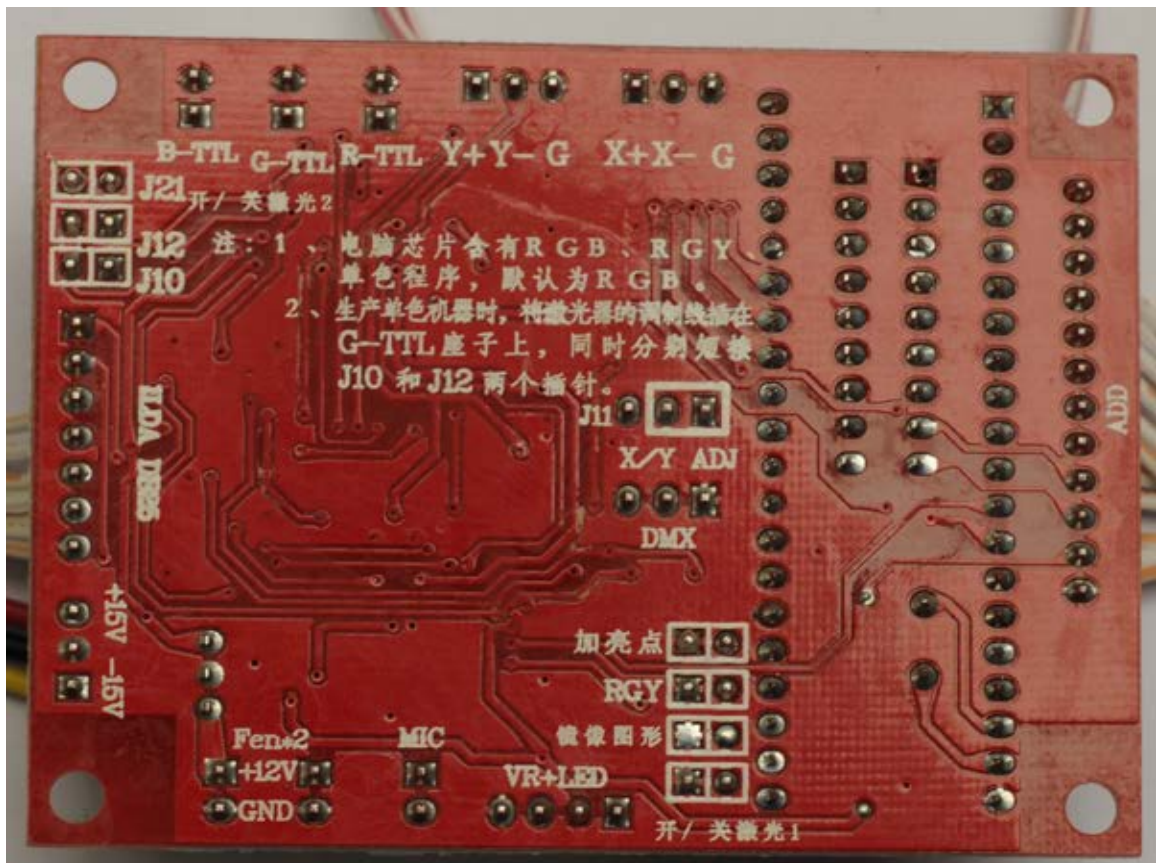
As I could randomly adjust the wrong pot without this knowledge

le(electrical offset of the driver, adjusted only in factory)





Blue TTL Green TTL Red TTL Y+/Y-/G X+/X-/G size DMX



Set laser show work mode

Address(1=ON 0=OFF)										Mode
1	2	3	4	5	6	7	8	9	10	
0	0	0	0	0	0	0	0	0	1	Audio mode
1	0	0	0	0	0	0	0	0	1	Auto mode
0	0	0	0	0	0	0	1	0	1	Audio cartoon mode
0	0	0	0	0	0	0	0	1	1	Audio pattern
1	0	0	0	0	0	0	0	0	1	Auto cartoon
1	0	0	0	0	0	0	0	1	1	Auto pattern
Set dmx address code									0	DMX/slave mode

Channel	DMX512	Function
1. Laser control mode	0-63	Shut up
	64-127	Audio
	128-191	Auto
	192-255	DMX
2. Pattern	0-163	More than 100 pattern
	164-255	Cartoon pattern
3.color	0--1	W
	2--9	R
	10--19	G
	20--29	B
	30--39	RG
	40--49	RB
	50--59	GB
	60--69	RGB
	70--79	R-G-B 3 color divided
	80--89	RG-RB-GB 3 color divided
	90--99	R-G-B-RG-RB-GB-RGB 7 color divided
	100--109	R-G-B-RG-RB-GB-RGB Color flow
	110-119	R-G-B 3 color divided
	120--129	RG-RB-GB 3 color divided
	130--139	R-G-B-RG-RB-GB color divided
	140--179	R-G-B auto choice
180--219	RG-RB-GB auto choice	
220-255	R-G-B-RG-RB-GB-RGB auto choice	
4.X position	0--127	manual adjustment
	128--160	Move Left
	161--192	Move right
	193--224	Move left or right
	225--255	Jumping around

5.Y position	0--127	manual adjustment
	128--160	Move down
	161--192	Move up
	193--224	Move up or down
	225-240	Jumping around
	241-255	Square trajectories
6 X axis gradient	0--150	Manual morphing
	151--255	Automatic morphing
7 Y axis gradient	0--150	Manual morphing
	151--255	Automatic morphing
8 Rotator	0---180	Manual rotation
	181—224	Automatic Anticlockwise rotation
	225--255	Automatic clockwise rotation
9.zoom	0---10	normal
	11—115	Manual zoom
	116--170	Auto big
	171--210	Auto small
	211--255	Auto zoom
10. Sine wave	0--127	Level fluctuation
	128--255	vertical fluctuation
11.Display mode	0---63	normal
	64--127	Shining point display
	128--191	Section line display
	192--255	Point display
12.Gradually drawing	0--64	Manual gradually drawing
	65--127	Forward gradually drawing
	128--191	Reverse gradually drawing
	192--255	positive and negative automatic
13 Pattern	0—255	Select two different motion
14 (Double pattern mode) Second pattern choice	0—203	Same CH2
15 (Double pattern mode) Second pattern color choice	0--255	Same CH3